

Date : 19 November 2009, Thursday

Venue: Amara Hotel, Connection Room 1, Level 3

Time : 2.30 pm



### RESIDENTIAL

#### 1A Holland Grove Drive, D10

- 2-storey semi-detached house
- 3,497 sf approx.
- Freehold
- Owner's Sale
- Contact : Mary +65 9388 7879



#### 148 Pasir Ris Road, D17

- 2-storey detached house, near Pasir Ris Beach, wide frontage
- 8,007 sf approx.
- 999 years
- Owner's Sale
- Contact : Sharon +65 9686 4449
- <http://www.youtube.com/watch?v=yjVT4IXv3ec>



#### 23 Lucky Crescent, D16

- 3-storey semi-detached house, 4+1
- 3,599 sf approx.
- Freehold
- Owner's Sale
- Contact : Sharon +65 9686 4449
- <http://www.youtube.com/watch?v=TxC30BVUMVA>



#### 17T Limau Garden, D16

- 3-storey semi-detached house, well kept
- Approx. Land Area: 2,831 sf
- Approx. Gross Built-in Area: 3,175sf
- 99 years leasehold wef 1994
- Owner's Sale
- Contact : Magdalene +65 9850 6526



#### 7 Peakville Terrace, D16

- 3-storey corner terrace house with attic level
- 2,942 sf approx.
- Freehold
- Owner's Sale
- Contact : Magdalene +65 9850 6526
- [http://www.youtube.com/watch?v=EQL\\_YakhyJM](http://www.youtube.com/watch?v=EQL_YakhyJM)



<b>HOTLINES: 6228 7302</b>		<b>Email :</b>		<b>Website: <a href="http://client.knightfrank.com.sg/aucauc/knightfrank.com.sg">http://client.knightfrank.com.sg/aucauc/knightfrank.com.sg</a></b>	
Mary Sai	6228 6886	Christina Koh	6228 6892	Jennifer Teo	6228 7323
<a href="mailto:mary.sai@sg.knightfrank.com">mary.sai@sg.knightfrank.com</a>		<a href="mailto:christina.koh@sg.knightfrank.com">christina.koh@sg.knightfrank.com</a>		<a href="mailto:jennifer.teo@sg.knightfrank.com">jennifer.teo@sg.knightfrank.com</a>	
Sharon Lee	6228 6891	Magdalene Chong	6228 6890	Derrick Loi	6228 7305
<a href="mailto:sharon.lee@sg.knightfrank.com">sharon.lee@sg.knightfrank.com</a>		<a href="mailto:magdalene.chong@sg.knightfrank.com">magdalene.chong@sg.knightfrank.com</a>		<a href="mailto:derrick.loi@sg.knightfrank.com">derrick.loi@sg.knightfrank.com</a>	

**While every reasonable care has been taken in preparing the contents of this list, the owner and the marketing agent cannot be held responsible for any inaccuracy. The particulars in this summary do not constitute, nor constitute any part of, an offer or contract.**

Knight Frank Pte Ltd 16 Raffles Quay #30-00 Hong Leong Building Singapore 048581  
Tel: (65) 6222 1333 Fax: (65) 6221 9305 [www.knightfrank.com.sg](http://www.knightfrank.com.sg) Reg. No. 198205243Z

Other Offices:

Knight Frank Estate Management Pte Ltd 3 Lim Teck Kim Road #01-01/02 Singapore Technologies Building Singapore 088934  
Knight Frank Shopping Centre Management Pte Ltd 16 Raffles Quay #30-00 Hong Leong Building Singapore 048581  
KF Property Network Pte Ltd (Licensee) 167 Jalan Bukit Merah #06-10 Connection One Tower 5 Singapore 150167



## RESIDENTIAL

### 59 Limau Garden, D16 (Tenanted)

- 2-storey semi-detached house
- 2,735 sf approx.
- Freehold
- Owner's Sale
- Contact : Magdalene +65 9850 6526
- <http://www.youtube.com/watch?v=OSgJUP1URTI>



### 37 Jalan Redop, D28

- 2½-storey semi-detached house with koi pond
- 3,150 sf approx.
- Freehold
- Owner's Sale
- Contact : Magdalene +65 9850 6526
- <http://www.youtube.com/watch?v=OSgJUP1URTI>



### #10-24 ONE-NORTH RESIDENCES, 7 One-North Gateway, D05

- 3-bedroom apartment, just TOP, face greenery/pool, near MRT/amenities
- 1,313 sf approx.
- 99 years leasehold wef 15/9/2005
- Owner's Sale
- Contact : Magdalene +65 9850 6526



### #11-09 ONE-NORTH RESIDENCES, 7 One-North Gateway, D05

- 2+study apartment, just TOP, face greenery/pool, near MRT/amenities
- 1,109 sf approx.
- 99 years leasehold wef 15/9/2005
- Owner's Sale
- Contact : Magdalene +65 9850 6526
- <http://www.youtube.com/watch?v=9GJGoQIVRVY>



### 352B King George's Avenue, D08

- A corner unit currently used as living quarter, tenanted
- 2,777 sf approx.
- Freehold
- Owner's Sale
- Contact : Magdalene +65 9850 6526
- <http://www.youtube.com/watch?v=BeK9chd1EP0>



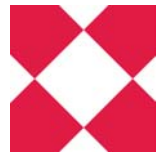
<b>HOTLINES: 6228 7302</b>		<b>Email :</b>		<b>Website: <a href="http://client.knightfrank.com.sg/aucauc@knightfrank.com.sg">http://client.knightfrank.com.sg/aucauc@knightfrank.com.sg</a></b>	
Mary Sai	6228 6886	Christina Koh	6228 6892	Jennifer Teo	6228 7323
mary.sai@sg.knightfrank.com		christina.koh@sg.knightfrank.com		jennifer.teo@sg.knightfrank.com	
Sharon Lee	6228 6891	Magdalene Chong	6228 6890	Derrick Loi	6228 7305
sharon.lee@sg.knightfrank.com		magdalene.chong@sg.knightfrank.com		derrick.loi@sg.knightfrank.com	

*While every reasonable care has been taken in preparing the contents of this list, the owner and the marketing agent cannot be held responsible for any inaccuracy. The particulars in this summary do not constitute, nor constitute any part of, an offer or contract.*

Knight Frank Pte Ltd 16 Raffles Quay #30-00 Hong Leong Building Singapore 048581  
Tel: (65) 6222 1333 Fax: (65) 6221 9305 [www.knightfrank.com.sg](http://www.knightfrank.com.sg) Reg. No. 198205243Z

**Other Offices:**

Knight Frank Estate Management Pte Ltd 3 Lim Teck Kim Road #01-01/02 Singapore Technologies Building Singapore 088934  
Knight Frank Shopping Centre Management Pte Ltd 16 Raffles Quay #30-00 Hong Leong Building Singapore 048581  
KF Property Network Pte Ltd (Licensee) 167 Jalan Bukit Merah #06-10 Connection One Tower 5 Singapore 150167



## RESIDENTIAL

### #02-13 THE CORNWALL, 2A Cornwall Gardens, D10

- Studio Apartment
- 764 sf approx.
- Freehold
- Owner's Sale
- Contact : Jennifer +65 9365 3758
- <http://www.youtube.com/watch?v=z2f5NXu0k00>



### 44C Holland Grove Road, HENRY PARK APARTMENTS, D10

- Walk-up apartment, tenanted
- 1,378 sf approx.
- 999 years
- Owner's Sale
- Contact : Jennifer +65 9365 3758
- <http://www.youtube.com/watch?v=4RJNQlprN8>



### #03-36 THE SHELFORD, 1E SHELFORD ROAD, D10

- 3+1 bedroom apartment, Tenanted
- 1,453 sf approx.
- Freehold
- Owner's Sale
- Contact : Magdalene +65 9850 6526
- [www.youtube.com/watch?v=UN5G4ZozpiE](http://www.youtube.com/watch?v=UN5G4ZozpiE)



### #02-01 REGENT COURT, 1091 Serangoon Road, D12

- 2-bedroom apartment, currently tenanted
- 969 sf approx.
- Freehold
- Mortgagee's Sale
- Contact : Magdalene +65 9850 6526
- <http://www.youtube.com/watch?v=0le9ZjN9CzI>



### #12-03 FERNWOOD TOWER, 28 Fernwood Terrace, D15

- Apartment
- 1,636 sf approx.
- Freehold
- Order of Court Sale
- Contact : Derrick +65 9101 4747
- <http://www.youtube.com/watch?v=KpGvzc7UnK8>



<b>HOTLINES: 6228 7302</b>		<b>Email :</b>		<b>Website: <a href="http://client.knightfrank.com.sg/aucauc@knightfrank.com.sg">http://client.knightfrank.com.sg/aucauc@knightfrank.com.sg</a></b>	
Mary Sai	6228 6886	Christina Koh	6228 6892	Jennifer Teo	6228 7323
<a href="mailto:mary.sai@sg.knightfrank.com">mary.sai@sg.knightfrank.com</a>		<a href="mailto:christina.koh@sg.knightfrank.com">christina.koh@sg.knightfrank.com</a>		<a href="mailto:jennifer.teo@sg.knightfrank.com">jennifer.teo@sg.knightfrank.com</a>	
Sharon Lee	6228 6891	Magdalene Chong	6228 6890	Derrick Loi	6228 7305
<a href="mailto:sharon.lee@sg.knightfrank.com">sharon.lee@sg.knightfrank.com</a>		<a href="mailto:magdalene.chong@sg.knightfrank.com">magdalene.chong@sg.knightfrank.com</a>		<a href="mailto:derrick.loi@sg.knightfrank.com">derrick.loi@sg.knightfrank.com</a>	

**While every reasonable care has been taken in preparing the contents of this list, the owner and the marketing agent cannot be held responsible for any inaccuracy. The particulars in this summary do not constitute, nor constitute any part of, an offer or contract.**

Knight Frank Pte Ltd 16 Raffles Quay #30-00 Hong Leong Building Singapore 048581  
Tel: (65) 6222 1333 Fax: (65) 6221 9305 [www.knightfrank.com.sg](http://www.knightfrank.com.sg) Reg. No. 198205243Z

**Other Offices:**

Knight Frank Estate Management Pte Ltd 3 Lim Teck Kim Road #01-01/02 Singapore Technologies Building Singapore 088934  
Knight Frank Shopping Centre Management Pte Ltd 16 Raffles Quay #30-00 Hong Leong Building Singapore 048581  
KF Property Network Pte Ltd (Licensee) 167 Jalan Bukit Merah #06-10 Connection One Tower 5 Singapore 150167



## RESIDENTIAL

### #02-03 ASTOR GREEN, 7 Pine Grove, D21

- 2-bedroom apartment, tenanted, pool view
- 1,087 sf approx.
- 99 years leasehold wef 18/11/1991
- Owner's Sale
- Contact : Jennifer +65 9365 3758
- [http://www.youtube.com/watch?v=Rp-lAAvIh\\_I](http://www.youtube.com/watch?v=Rp-lAAvIh_I)



### #01-07 CHANTILLY RISE, 82 Hillview Avenue, D23

- Ground floor 4-bedroom apartment, pool view
- 1,798 sf approx.
- Freehold
- Mortgagee's Sale
- Contact : Jennifer +65 9365 3758
- <http://www.youtube.com/watch?v=CHo9PybsdzA>



### #04-28 YISHUN EMERALD, 32 Canberra Drive, D27

- 3+1 apartment
- 1,206 sf approx.
- 99 years leasehold wef 16/2/1998
- Owner's Sale
- Contact : Magdalene +65 9850 6526
- <http://www.youtube.com/watch?v=-OMT1bc76zw>



### 400 River Valley Road, D10

- Ground floor 3-bedroom apartment, tenanted
- 1,238 sf approx.
- Freehold
- Owner's Sale
- Contact : Jennifer +65 9365 3758



### #33-03 ONE DEVONSHIRE, 1 Devonshire Road D09

- 3+1 bedroom apartment
- TOP by Dec 2012
- 1,280 sf approx.
- Freehold
- Owner's Sale
- Contact : Magdalene +65 9850 6526
- <http://www.youtube.com/watch?v=zX6sPS0jYuw>



<b>HOTLINES: 6228 7302</b>		<b>Email :</b>		<b>Website: <a href="http://client.knightfrank.com.sg/aucauc@knightfrank.com.sg">http://client.knightfrank.com.sg/aucauc@knightfrank.com.sg</a></b>	
Mary Sai	6228 6886	Christina Koh	6228 6892	Jennifer Teo	6228 7323
<a href="mailto:mary.sai@sg.knightfrank.com">mary.sai@sg.knightfrank.com</a>		<a href="mailto:christina.koh@sg.knightfrank.com">christina.koh@sg.knightfrank.com</a>		<a href="mailto:jennifer.teo@sg.knightfrank.com">jennifer.teo@sg.knightfrank.com</a>	
Sharon Lee	6228 6891	Magdalene Chong	6228 6890	Derrick Loi	6228 7305
<a href="mailto:sharon.lee@sg.knightfrank.com">sharon.lee@sg.knightfrank.com</a>		<a href="mailto:magdalene.chong@sg.knightfrank.com">magdalene.chong@sg.knightfrank.com</a>		<a href="mailto:derrick.loi@sg.knightfrank.com">derrick.loi@sg.knightfrank.com</a>	

**While every reasonable care has been taken in preparing the contents of this list, the owner and the marketing agent cannot be held responsible for any inaccuracy. The particulars in this summary do not constitute, nor constitute any part of, an offer or contract.**

Knight Frank Pte Ltd 16 Raffles Quay #30-00 Hong Leong Building Singapore 048581  
Tel: (65) 6222 1333 Fax: (65) 6221 9305 [www.knightfrank.com.sg](http://www.knightfrank.com.sg) Reg. No. 198205243Z

**Other Offices:**

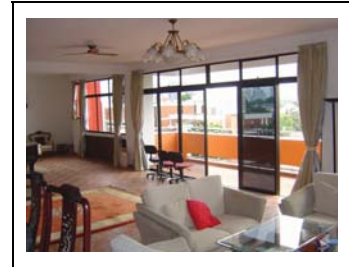
Knight Frank Estate Management Pte Ltd 3 Lim Teck Kim Road #01-01/02 Singapore Technologies Building Singapore 088934  
Knight Frank Shopping Centre Management Pte Ltd 16 Raffles Quay #30-00 Hong Leong Building Singapore 048581  
KF Property Network Pte Ltd (Licensee) 167 Jalan Bukit Merah #06-10 Connection One Tower 5 Singapore 150167



## RESIDENTIAL

### #08-370 TAN TONG MENG TOWER, 370 Thomson Road, D11

- 4-bedroom apt, spacious living room. Unblocked View.
- 3,240 sf
- Freehold
- Owner's Sale
- Contact : Magdalene +65 9850 6526
- <http://www.youtube.com/watch?v=J2xwpT4nz4A>



### #09-05 SOUTHAVEN I, 41 Hindhede Walk, D21

- 3-bedroom penthouse with roof terrace
- 2,960 sf approx.
- 99 years leasehold wef 1/8/1994
- Mortgagee's Sale
- Contact : Jennifer +65 9365 3758
- <http://www.youtube.com/watch?v=K3GX6qWld8k>



### #23-30 CITYLIGHT, 90 Jellicoe Road, D08

- 2-bedroom apartment
- 926 sf approx.
- 99 years leasehold wef 5/1/2004
- Mortgagee's Sale
- Contact : Derrick +65 9101 4747



### #12-07 THE BENCOOLEN, 180A Bencoolen Street, D07

- Apartment
- 1,044 sf approx.
- 99 years leasehold wef 24/6/1995
- Owner's Sale
- Contact : Derrick +65 9101 4747



## COMMERCIAL

### 500 Geylang Road, D14

- Ground floor shop unit
- 1,658 sf approx.
- Freehold
- Owner's Sale
- Contact : Derrick +65 9101 4747



<b>HOTLINES: 6228 7302</b>		<b>Email :</b>		<b>Website: <a href="http://client.knightfrank.com.sg/aucauc@knightfrank.com.sg">http://client.knightfrank.com.sg/aucauc@knightfrank.com.sg</a></b>	
Mary Sai	6228 6886	Christina Koh	6228 6892	Jennifer Teo	6228 7323
<a href="mailto:mary.sai@sg.knightfrank.com">mary.sai@sg.knightfrank.com</a>		<a href="mailto:christina.koh@sg.knightfrank.com">christina.koh@sg.knightfrank.com</a>		<a href="mailto:jennifer.teo@sg.knightfrank.com">jennifer.teo@sg.knightfrank.com</a>	
Sharon Lee	6228 6891	Magdalene Chong	6228 6890	Derrick Loi	6228 7305
<a href="mailto:sharon.lee@sg.knightfrank.com">sharon.lee@sg.knightfrank.com</a>		<a href="mailto:magdalene.chong@sg.knightfrank.com">magdalene.chong@sg.knightfrank.com</a>		<a href="mailto:derrick.loi@sg.knightfrank.com">derrick.loi@sg.knightfrank.com</a>	

**While every reasonable care has been taken in preparing the contents of this list, the owner and the marketing agent cannot be held responsible for any inaccuracy. The particulars in this summary do not constitute, nor constitute any part of, an offer or contract.**

Knight Frank Pte Ltd 16 Raffles Quay #30-00 Hong Leong Building Singapore 048581  
Tel: (65) 6222 1333 Fax: (65) 6221 9305 [www.knightfrank.com.sg](http://www.knightfrank.com.sg) Reg. No. 198205243Z

Other Offices:

Knight Frank Estate Management Pte Ltd 3 Lim Teck Kim Road #01-01/02 Singapore Technologies Building Singapore 088934  
Knight Frank Shopping Centre Management Pte Ltd 16 Raffles Quay #30-00 Hong Leong Building Singapore 048581  
KF Property Network Pte Ltd (Licensee) 167 Jalan Bukit Merah #06-10 Connection One Tower 5 Singapore 150167



## COMMERCIAL

### Block 161 Bukit Merah Central #01-3729, D03

- HDB shop with living quarters, tenanted to Bank (till March 2012)
- 3,165 sf approx.
- 83 years wef 1/3/1996
- Owner's Sale
- Contact : Jennifer +65 9365 3758



### #08-10 PEOPLE'S PARK CENTRE, 101A upper Cross Street, D01

- Office
- 1,377 sf approx.
- 99 years wef 2/6/1970
- Owner's Sale
- Contact : Magdalene +65 9850 6526



**Next Auction : 10<sup>th</sup> December 2009 (Thursday)**

<b>HOTLINES: 6228 7302</b>		<b>Email :</b>		<b>Website: <a href="http://client.knightfrank.com.sg/auc">http://client.knightfrank.com.sg/auc</a></b>	
<b><a href="mailto:auc@knightfrank.com.sg">auc@knightfrank.com.sg</a></b>					
Mary Sai	6228 6886	Christina Koh	6228 6892	Jennifer Teo	6228 7323
<a href="mailto:mary.sai@sg.knightfrank.com">mary.sai@sg.knightfrank.com</a>		<a href="mailto:christina.koh@sg.knightfrank.com">christina.koh@sg.knightfrank.com</a>		<a href="mailto:jennifer.teo@sg.knightfrank.com">jennifer.teo@sg.knightfrank.com</a>	
Sharon Lee	6228 6891	Magdalene Chong	6228 6890	Derrick Loi	6228 7305
<a href="mailto:sharon.lee@sg.knightfrank.com">sharon.lee@sg.knightfrank.com</a>		<a href="mailto:magdalene.chong@sg.knightfrank.com">magdalene.chong@sg.knightfrank.com</a>		<a href="mailto:derrick.loi@sg.knightfrank.com">derrick.loi@sg.knightfrank.com</a>	

***While every reasonable care has been taken in preparing the contents of this list, the owner and the marketing agent cannot be held responsible for any inaccuracy. The particulars in this summary do not constitute, nor constitute any part of, an offer or contract.***

Knight Frank Pte Ltd 16 Raffles Quay #30-00 Hong Leong Building Singapore 048581  
Tel: (65) 6222 1333 Fax: (65) 6221 9305 [www.knightfrank.com.sg](http://www.knightfrank.com.sg) Reg. No. 198205243Z

**Other Offices:**

Knight Frank Estate Management Pte Ltd 3 Lim Teck Kim Road #01-01/02 Singapore Technologies Building Singapore 088934  
Knight Frank Shopping Centre Management Pte Ltd 16 Raffles Quay #30-00 Hong Leong Building Singapore 048581  
KF Property Network Pte Ltd (Licensee) 167 Jalan Bukit Merah #06-10 Connection One Tower 5 Singapore 150167